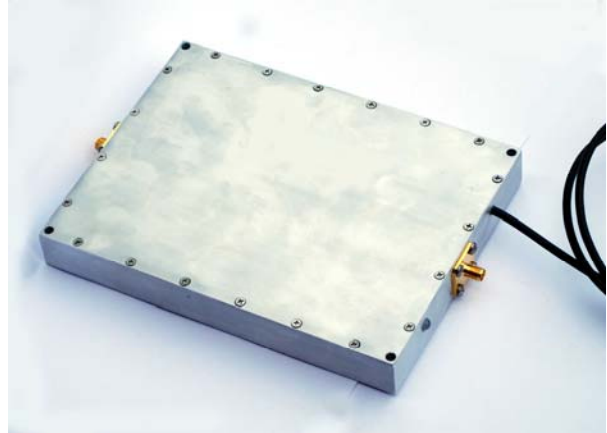




1.3GHz 20Watt Amplifiers Item # 70120

A bi-directional amplifier that does not require a fan or huge heat sink. Designed with the latest available components, the unit delivers 20Watt output at very high efficiency... Works with all 1.3GHz TDD radios. It's a highly linear amplifier that works with OFDM modulation without any problem.

Due to the high RF power outputs these units are only offered for sale to Military, OEM, Licensed or overseas customers.



Specifications

Operating Range	1300 - 1395 MHz
Operating Mode	TDD, Time Division duplex,
Transmit Power	43dBm, 20 Watt
Transmit Gain	20 dB
Transmit input Power	0dBm min 20 dBm max
Receive Gain	15 dB
Noise Figure	3.6 dB
LED indicators	Red for Receive (Default mode) Green for Transmit
Power Consumption @ 28 V DC	80mA Rx, 1.6A Tx
Operating Temp	-40 °C to + 65 °C

DC Power: 28 V DC via direct feed.

Mechanical:

Amplifier

Dimension:	4.8" x 6.4" x 1.2"
Enclosure:	Weatherproof, machined aluminum housing with Anodized finish
Connectors:	SAM Females
Weight:	1 lb, 5.0 oz

Optional DC injector for Outdoor Version:

DC Injector

Dimension:	1.4" x 3.5" x 1.0" (with Type N female connectors)
Enclosure:	Machined aluminum housing with Anodized finish
Connectors:	Type N female
Weight:	4.7 Oz.